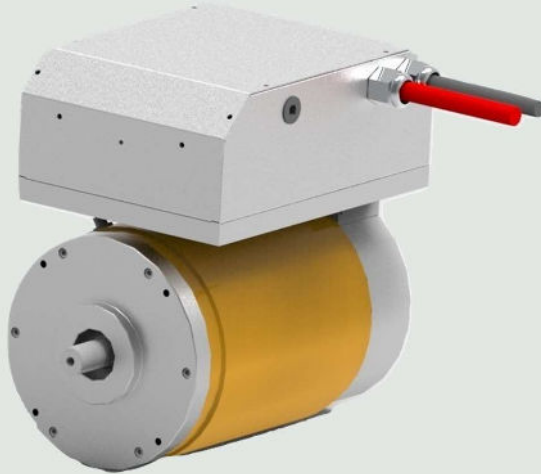




EV hypE Propulsion LV Water Cooled

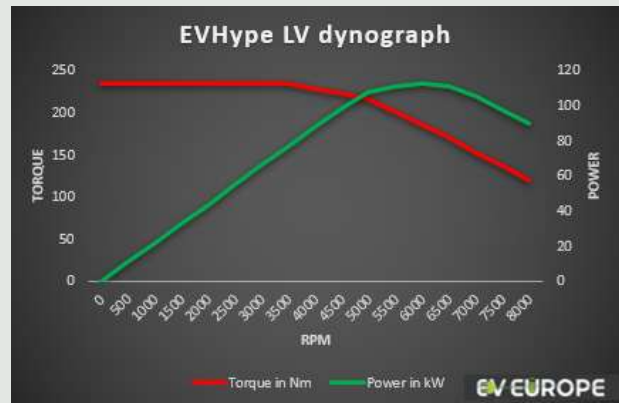
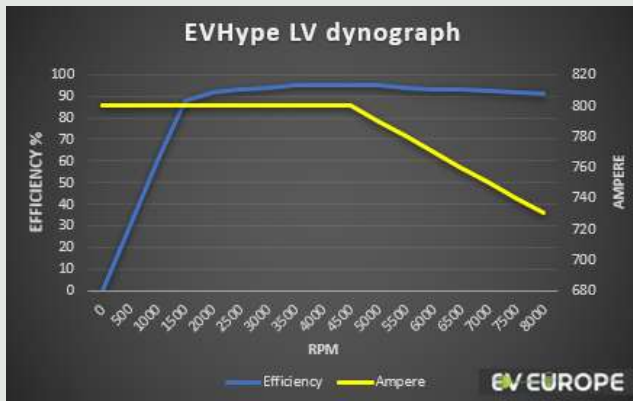
The EV HypE Drive system is a fully assembled, tested, pre-run and “ready to use” drive system, designed to make an electric propulsion as simple as possible. The EV Hype set can already run with the HV cabling and only 1 signal. All primary components (including LV wiring loom) plus a 12 / 24 VDC power output and optional public charging station communication are integrated into the design of the EV HypE.



Type	EV hypE LV WC
Motor Type	Synchronous Reluctance Internal Permanent Magnet (SRIPM)
Cooling	Integrated Water Cooled of both motor and motor controller
Voltage range	62 - 130 VDC
Maximum current (peak 10s)	750 Amp
Maximum power peak	90 kW
Maximum power continuous	55 – 65 kW
Maximum Torque	235 Nm
Maximum speed	8000 RPM
Maximum efficiency	95%
Secondary output	12 or 24 VDC (option) – 450 watt
Weight	Ca. 79 kg
Dimensions	367 x 250 x 397 mm
Dimensions shaft	Ø 28.575 mm (1.125")
Options	Public Charging Communication Forced air cooling

* The specifications of the synchronous Reluctance Internal Magnet Motor are not comparable to standard AC systems due to the efficiency of up to 95% over virtually the entire RPM range and a torque 50% higher than standard AC drive systems with a similar weight and volume.

MOTOR DIAGRAMS*



*Motor test diagrams based on 130 VDC battery voltage